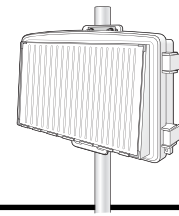


# Universal Shelter



**6618**

---

## Vantage Pro2™ Systems

The Universal Shelter allows you to shelter your Vantage Pro2 or Vantage Vue console, or Weather Envoy or Envoy8X in remote or field installations. It can also be used to house batteries or other field equipment.

The kit's weather-resistant shelter has been carefully designed to allow for the mounting of all Davis weather station consoles and Envoys. It has access holes in the floor for cable access into the shelter. (Holes come with removable plugs; cables should be routed through holes using Davis rubber grommets.)

Housing Material . . . . . Rugged ASA plastic  
Dimensions (width x length x height) . . . . . 13.75 X 10 X 4.18 inches; 34.9 X 25.4 X 10.6 cm  
Weight . . . . . 3.25 lbs; 1.64 kg

## Package Dimensions

---

Product #	Package Dimensions (Length x Width x Height)	Package Weight	UPC Codes
6618	14" x 10" x 4.27" 35.6 x 25.4 x 10.9 cm	4.5 lb 2 kg	011698009794